



Rizvi Education Society's
RIZVI COLLEGE
 OF ARTS, SCIENCE & COMMERCE

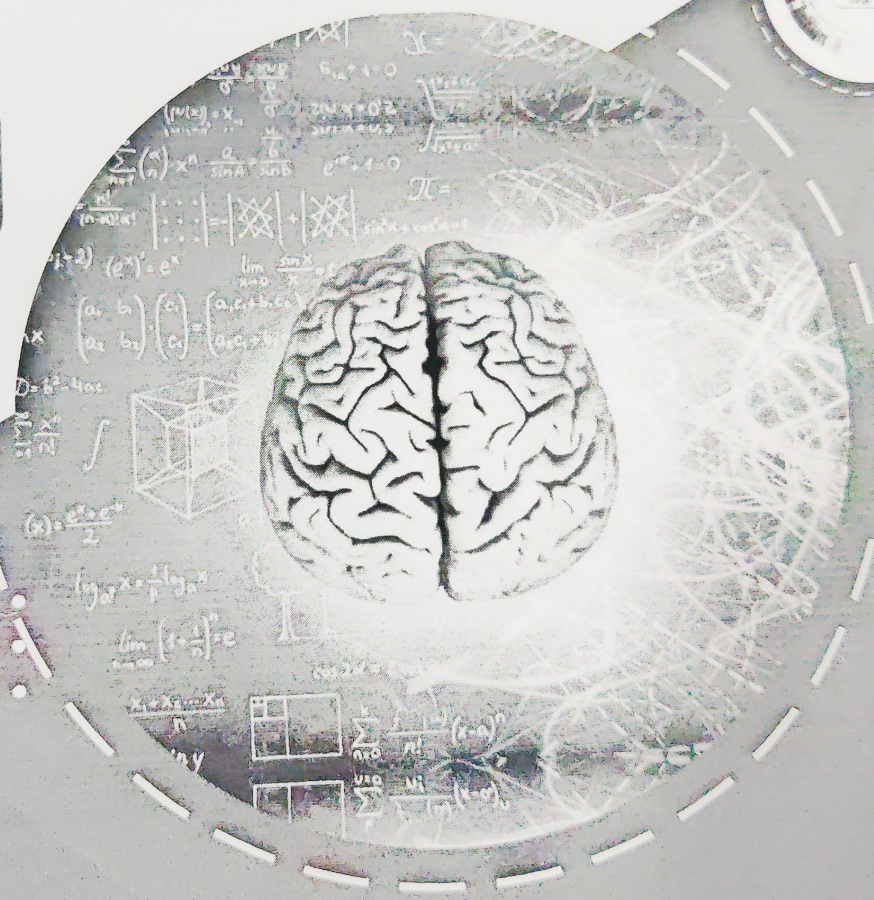


International Journal of Research

A Blind Peer Reviewed Biannual Journal
 Impact Factor SJIF 2022 (8.694)



Volume 11 Special Issue
 March 2022
 ISSN 2231 - 6124



Subject :
MULTI DISCIPLINARY

EDITOR-IN-CHIEF
Dr. (Mrs.) Anjum Ara M. K. Ahmad

E
 P
 a
 B.
 ar
 ara

39	Web Based Corporate Disclosure: An Analysis of Present Legal Provisions in India <i>Nabin Kumar Sarawagi, Ahmed Hussain</i>	163-166
40	A Research Exploring the impact of COVID-19 on tourism: transformational potential and implications for a sustainable recovery of the travel industry <i>Heena Jayesh Ganatra</i>	167-170
41	A Study of Delisting of Companies from Stock Exchanges: A Case Study of National Stock Exchange (NSE) <i>Anil R. Chougule</i>	171-174
42	A Study on Bitcoins and Cryptocurrency: Pros and Cons <i>G. L Parvathamma, Nagma N.</i>	175-179
43	Analysis of Catastrophic Healthcare expenditure and its impoverishment effect in Developing countries <i>Rajendra Vasant Rao Mali</i>	180-182
44	Analyzing the Exchange Rate Stability of India: Theory and Evidence <i>Deepika Malik</i>	183-187
45	Climate change <i>Mona Nimesh Dedhia</i>	188-192
46	Impact on Online education on students <i>Subheda K</i>	193-195
47	Students' participation in the Gig Economy during the pandemic with special reference to Mangaluru <i>Carrel Sharel Pereira, Shivshankar Bhatt, Sharol Savitha Rodrigues, Avinash N</i>	196-200
48	Women Employment in organized sector in India: Trend analysis from (1990 to 2011) <i>Jasmeena Bashir, Sumair Nabi</i>	201-204
EDUCATION		
49	A Study of Student Teacher's Attitude towards E-Learning <i>Puja Saini, Meghna Mehndroo</i>	205-208
50	A Study on Impact on Online Education <i>Murti Chouhan</i>	209-212
51	Barriers of Online learning during the Corona pandemic period Special reference to Higher education in Sri Lanka <i>G. Gnanachandran</i>	213-218
52	Impact of online education on Students <i>Palanshi Gupta, Sailee Shringarpure</i>	219-222
53	Impact on Online Education on Students <i>Parmeela Devi</i>	223-226
54	Issues and Challenges of Artificial Intelligence in Education <i>Asif Akhtar Baig</i>	227-231
55	Online Education and its Impact: A study on Senior secondary Level Girls at Mazbat area of Udalguri District <i>Jayanta Kalita, Kaberi Talukdar</i>	232-235
56	Online Teaching-Learning: A SWOT Analysis <i>Ravinder Singh, Sushma Gupta</i>	236-240
57	Psychological Impact of Online Education on Learners <i>Poonam Birok</i>	241-246

Climate Change

Mona Nimesh Dedhia

Assistant Professor, M. B. Harris College of Arts and
 A. E. Kalsekar College of Commerce and Management,
 Nallasopara-West, Nawayat Nagar, Tal-Vasai
 E mail: monadedhia707@gmail.com

Abstract

Climate change is the subject of how weather patterns change over decades or longer. Climate change takes place due to natural and human influences. Since the Industrial Revolution (i.e., 1750), humans have contributed to climate change through the emissions of GHGs and aerosols, and through changes in land use, resulting in a rise in global temperatures. Increases in global temperatures may have different impacts, such as an increase in storms, floods, droughts, and sea levels, and the decline of ice sheets, sea ice and glaciers. Global climate change has already had observable effects on the environment. Glaciers have shrunk, ice on rivers and lakes is breaking up earlier, plant and animal ranges have shifted and trees are flowering sooner. Effects that scientists had predicted in the past would result from global climate change are now occurring: loss of sea ice, accelerated sea level rise and longer, more intense heat waves.

Keywords: Climate Change, Green house, Global Warming.

Introduction

Climate change is a long-term change in the average weather patterns that have come to define Earth's local, regional and global climates. These changes have a broad range of observed effects that are synonymous with the term

Our atmosphere is getting hotter, more turbulent, and more unpredictable because of the "boiling and churning" effect caused by the heat-trapping greenhouse gasses within the upper layers of our atmosphere. With each increase of carbon, methane, or other greenhouse gas levels in the atmosphere, our local weather and global climate is further

agitated, heated, and "boiled."

Weather describes the conditions outside right now in a specific place. For example, if you see that it's raining outside right now, that's a way to describe today's weather. Rain, snow, wind, hurricanes, tornadoes — these are all weather events.

Climate, on the other hand, is more than just one or two rainy days. Climate describes the weather conditions that are expected in a region at a particular time of year.

Is it usually rainy or usually dry? Is it typically hot or typically cold? A region's climate is determined by observing its weather over a period of many

IMPACT FACTOR SJIF 2022 (8.694)



TRUE COPY

Principal
 Shurparaba Educational & Medical Trust's
 M. B. Harris College of Arts &
 A. E. Kalsekar College of Commerce & Management
 Nallasopara (W); Tal. Vasai, Dist. Palghar - 401 203.